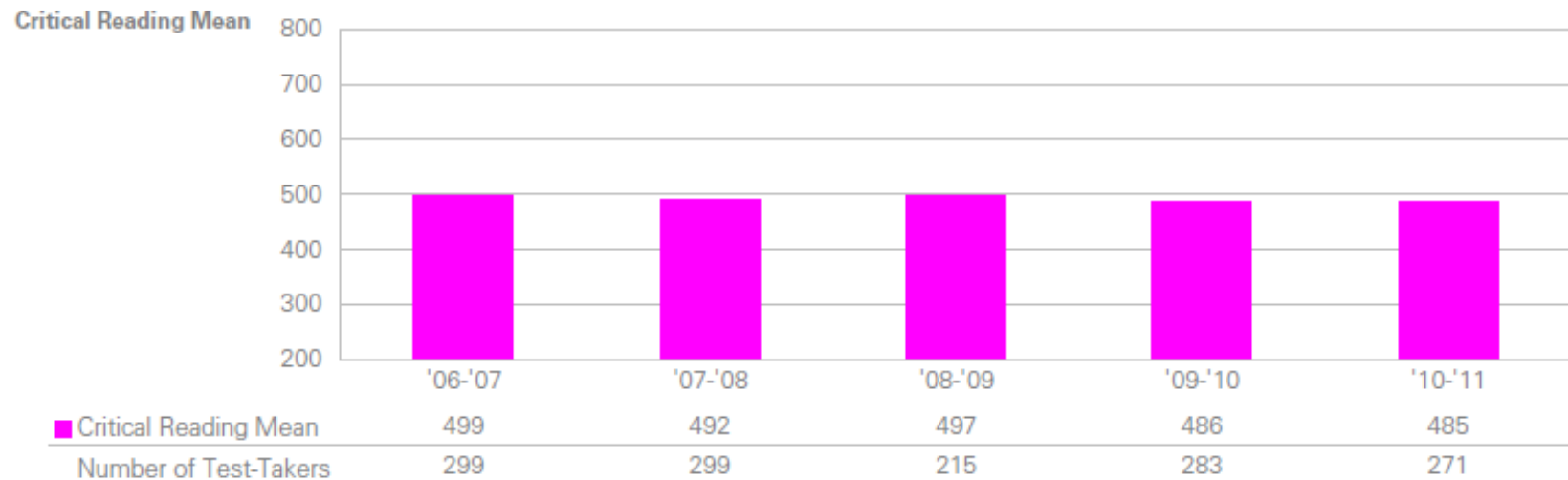


External Anchors  
SAT, AP, PSAT

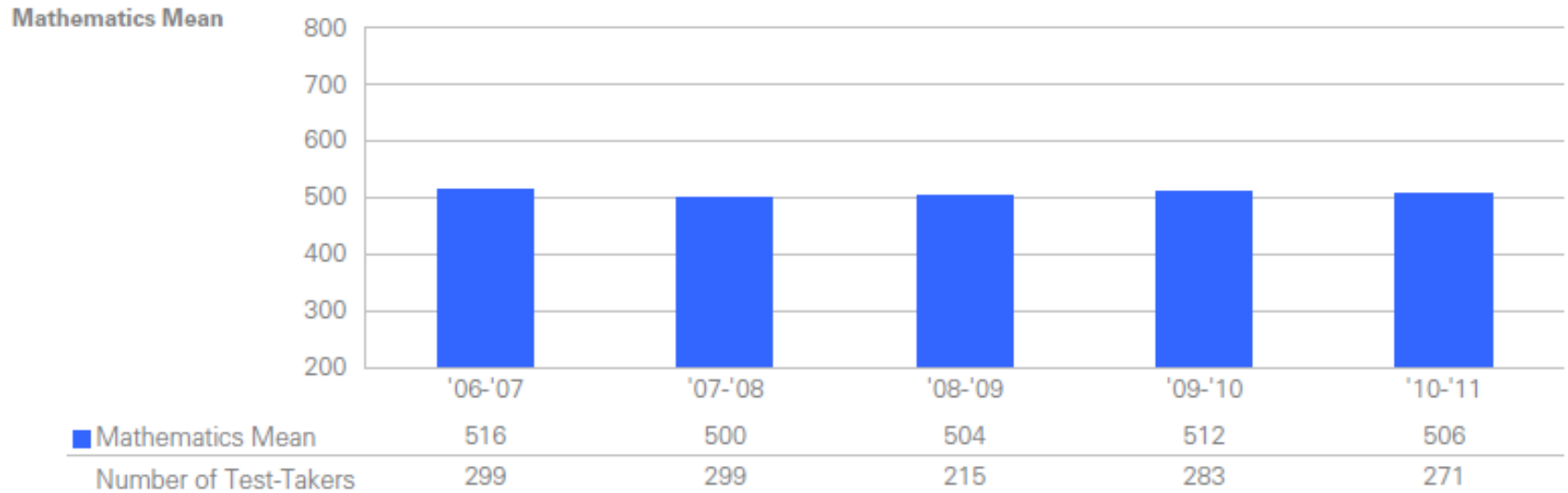
# Student Performance

# SAT Performance

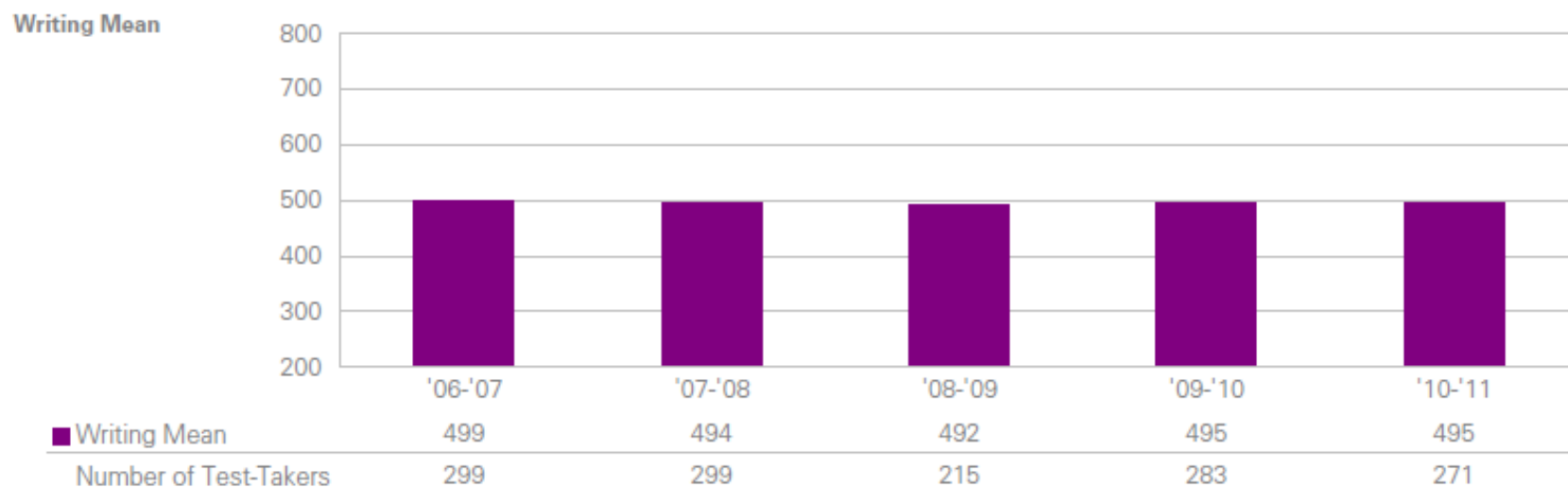
# Critical Reading



# Mathematics



# Writing



# SAT Subject Tests

	'09-'10			'10-'11		
	# of Tests Taken	% of Total	Mean	# of Tests Taken	% of Total	Mean
Total Tests Taken	82	100%		78	100%	
Chemistry	4	5%		3	4%	
Chinese with Listening	1	1%		0	0%	
Ecological Biology	4	5%		6	8%	597
French	0	0%		0	0%	
French with Listening	0	0%		0	0%	
German	0	0%		0	0%	
German with Listening	0	0%		0	0%	
Italian	0	0%		0	0%	
Japanese with Listening	0	0%		1	1%	
Korean with Listening	0	0%		1	1%	
Latin	2	2%		1	1%	
Literature	13	16%	659	11	14%	602
Math Level I (M1)	14	17%	597	12	15%	599
Math Level II (M2)	12	15%	641	13	17%	681
Modern Hebrew	0	0%		0	0%	
Molecular Biology	11	13%	663	14	18%	675
Physics	6	7%	627	2	3%	
Spanish	3	4%		1	1%	
Spanish with Listening	0	0%		0	0%	
U.S. History	11	13%	608	12	15%	608
World History	1	1%		1	1%	

# Advanced Placement

	'09-'10							'10-'11						
	# of Exams	% of Total	Score of 1	Score of 2	Score of 3	Score of 4	Score of 5	# of Exams	% of Total	Score of 1	Score of 2	Score of 3	Score of 4	Score of 5
Total # of Exams	138	100%	21	26	42	34	15	123	100%	14	17	32	31	29
Art History % of Total	0	–	0 –	0 –	0 –	0 –	0 –	0	–	0 –	0 –	0 –	0 –	0 –
Art: Studio 2D-Design % of Total	6	4%	0 0%	3 50%	1 17%	0 0%	2 33%	4	3%	– –	– –	– –	– –	– –
Art: Studio 3D-Design % of Total	1	1%	– –	– –	– –	– –	– –	0	–	0 –	0 –	0 –	0 –	0 –
Art: Studio Drawing % of Total	5	4%	0 0%	4 80%	0 0%	1 20%	0 0%	5	4%	1 20%	1 20%	1 20%	1 20%	1 20%
Biology % of Total	25	18%	9 36%	1 4%	8 32%	6 24%	1 4%	15	12%	2 13%	1 7%	5 33%	3 20%	4 27%
Chemistry % of Total	6	4%	2 33%	0 0%	1 17%	2 33%	1 17%	9	7%	3 33%	1 11%	1 11%	2 22%	2 22%
Chinese Language and Culture % of Total	0	–	0 –	0 –	0 –	0 –	0 –	0	–	0 –	0 –	0 –	0 –	0 –
Computer Science A % of Total	0	–	0 –	0 –	0 –	0 –	0 –	0	–	0 –	0 –	0 –	0 –	0 –
Economics: Macroeconomics % of Total	2	1%	– –	– –	– –	– –	– –	4	3%	– –	– –	– –	– –	– –
Economics: Microeconomics % of Total	0	–	0 –	0 –	0 –	0 –	0 –	0	–	0 –	0 –	0 –	0 –	0 –
English Language & Composition % of Total	20	14%	0 0%	1 5%	6 30%	10 50%	3 15%	11	9%	0 0%	1 9%	3 27%	3 27%	4 36%
English Literature & Composition % of Total	1	1%	– –	– –	– –	– –	– –	9	7%	0 0%	1 11%	4 44%	2 22%	2 22%
Environmental Science % of Total	10	7%	5 50%	3 30%	0 0%	2 20%	0 0%	3	2%	– –	– –	– –	– –	– –
French Language % of Total	0	–	0 –	0 –	0 –	0 –	0 –	0	–	0 –	0 –	0 –	0 –	0 –

# Advanced Placement

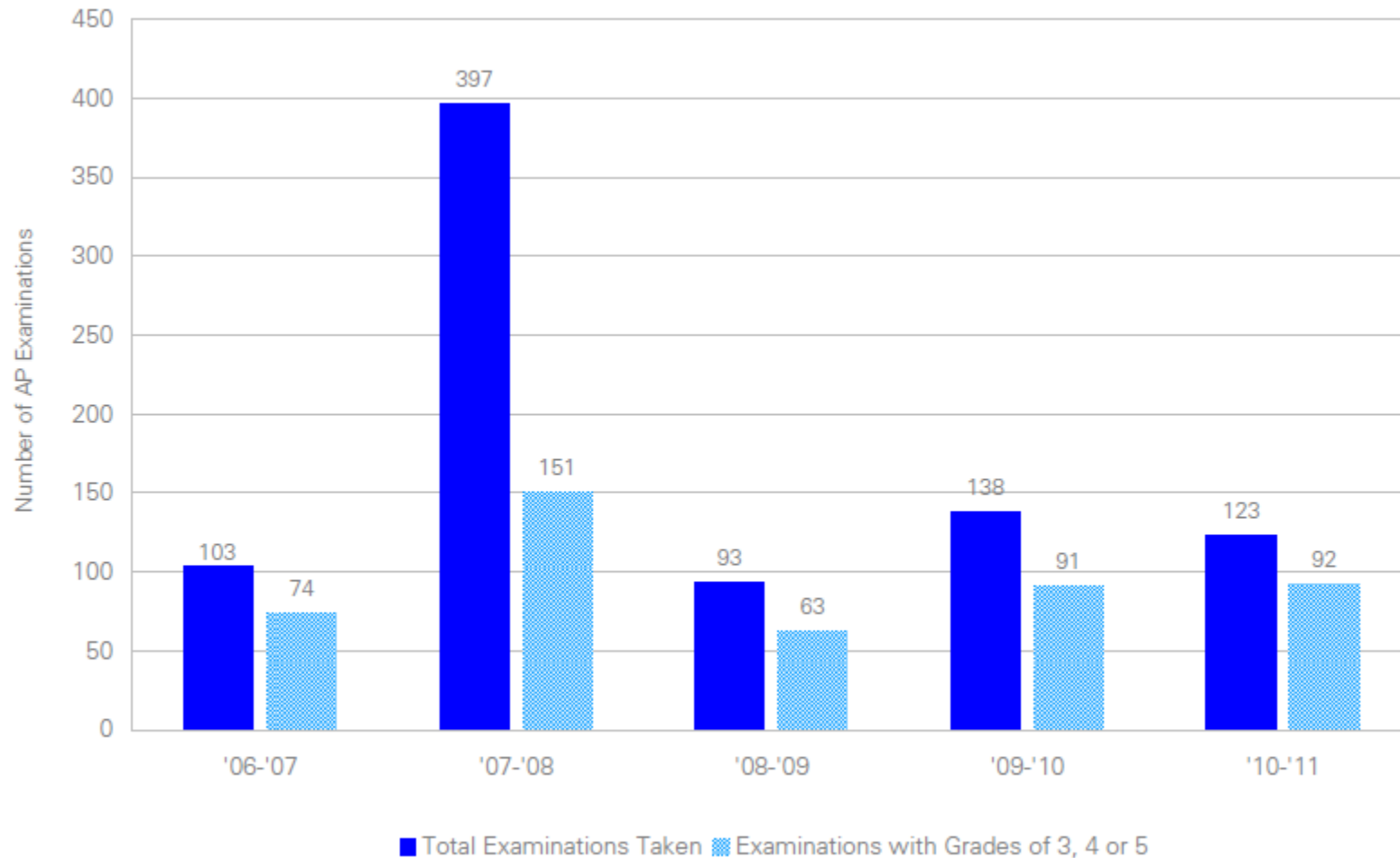
	'09-'10							'10-'11						
	# of Exams	% of Total	Score of 1	Score of 2	Score of 3	Score of 4	Score of 5	# of Exams	% of Total	Score of 1	Score of 2	Score of 3	Score of 4	Score of 5
German Language % of Total	0	–	0 –	0 –	0 –	0 –	0 –	0	–	0 –	0 –	0 –	0 –	0 –
Government & Politics: Comparative % of Total	0	–	0 –	0 –	0 –	0 –	0 –	1	1%	– –	– –	– –	– –	– –
Government & Politics: United States % of Total	5	4%	1 20%	1 20%	2 40%	1 20%	0 0%	10	8%	1 10%	3 30%	2 20%	3 30%	1 10%
History: European % of Total	0	–	0 –	0 –	0 –	0 –	0 –	1	1%	– –	– –	– –	– –	– –
History: United States % of Total	25	18%	1 4%	7 28%	12 48%	5 20%	0 0%	17	14%	3 18%	4 24%	4 24%	5 29%	1 6%
History: World % of Total	0	–	0 –	0 –	0 –	0 –	0 –	1	1%	– –	– –	– –	– –	– –
Human Geography % of Total	3	2%	– –	– –	– –	– –	– –	4	3%	– –	– –	– –	– –	– –
Japanese Language and Culture % of Total	0	–	0 –	0 –	0 –	0 –	0 –	0	–	0 –	0 –	0 –	0 –	0 –
Latin: Vergil % of Total	3	2%	– –	– –	– –	– –	– –	2	2%	– –	– –	– –	– –	– –
Mathematics: Calculus AB % of Total	9	7%	2 22%	1 11%	2 22%	2 22%	2 22%	8	7%	1 13%	1 13%	2 25%	1 13%	3 38%
Mathematics: Calculus BC % of Total	1	1%	– –	– –	– –	– –	– –	1	1%	– –	– –	– –	– –	– –
Music: Theory % of Total	0	–	0 –	0 –	0 –	0 –	0 –	1	1%	– –	– –	– –	– –	– –
Physics B % of Total	2	1%	– –	– –	– –	– –	– –	6	5%	1 17%	0 0%	1 17%	2 33%	2 33%
Physics C: Electricity & Magnetism % of Total	0	–	0 –	0 –	0 –	0 –	0 –	0	–	0 –	0 –	0 –	0 –	0 –
Physics C: Mechanics % of Total	0	–	0 –	0 –	0 –	0 –	0 –	0	–	0 –	0 –	0 –	0 –	0 –



# Advanced Placement

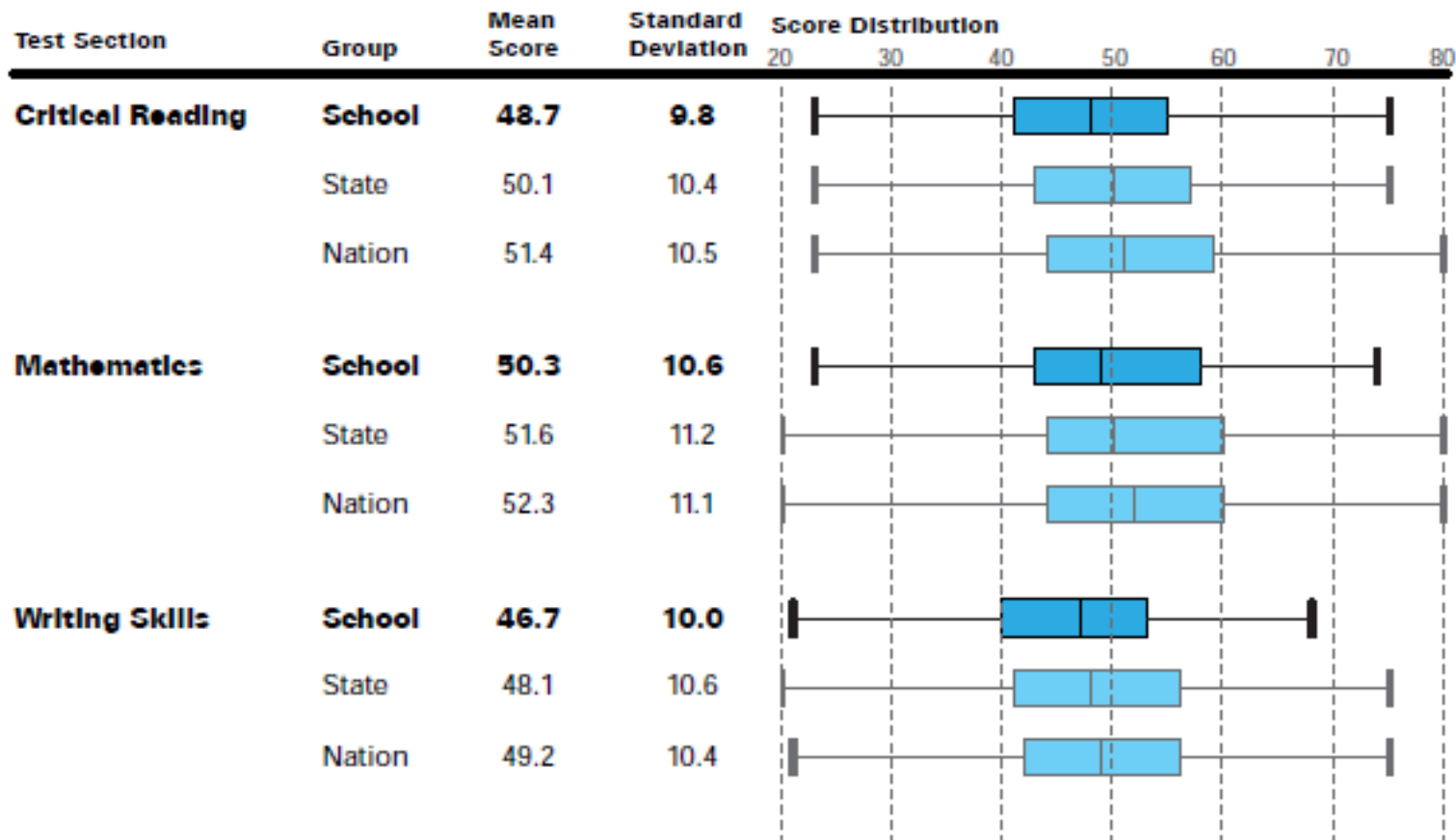
	'09-'10							'10-'11						
	# of Exams	% of Total	Score of 1	Score of 2	Score of 3	Score of 4	Score of 5	# of Exams	% of Total	Score of 1	Score of 2	Score of 3	Score of 4	Score of 5
Psychology % of Total	0	–	0 –	0 –	0 –	0 –	0 –	1	1%	– –	– –	– –	– –	– –
Spanish Language % of Total	2	1%	– –	– –	– –	– –	– –	2	2%	– –	– –	– –	– –	– –
Spanish Literature % of Total	0	–	0 –	0 –	0 –	0 –	0 –	0	–	0 –	0 –	0 –	0 –	0 –
Statistics % of Total	12	9%	0 0%	0 0%	8 67%	2 17%	2 17%	8	7%	0 0%	1 13%	2 25%	2 25%	3 38%

# Advanced Placement



# PSAT Performance

## (189 Students – 11<sup>th</sup> Grade)



# PSAT as College Readiness Indicator

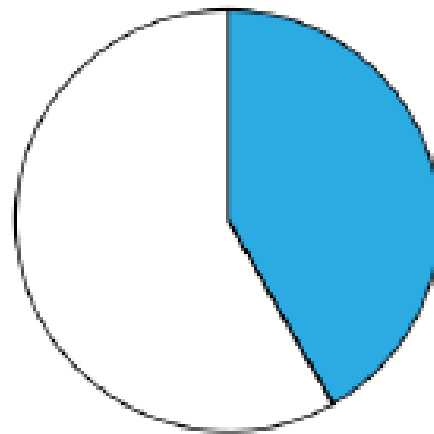
## College Readiness Benchmarks

The PSAT/NMSQT College Readiness Benchmarks represent the scores that a student should meet or exceed to be considered on track to be college ready (for more information about benchmarks, visit [www.collegeboard.com/results](http://www.collegeboard.com/results)).

The pie chart shows the percentage of your students who have met the

PSAT/NMSQT composite score benchmark (152 for juniors and 145 for sophomores). Use this information in combination with Roster of Student Scores and Plans or optional Student Data File CD to identify students who may need extra support or who may be ready for more rigorous course work.

# Nutley's College Readiness



**41.8%**

COLLEGE READY

Nation: 50.4%

# PSAT Performance

Critical Reading

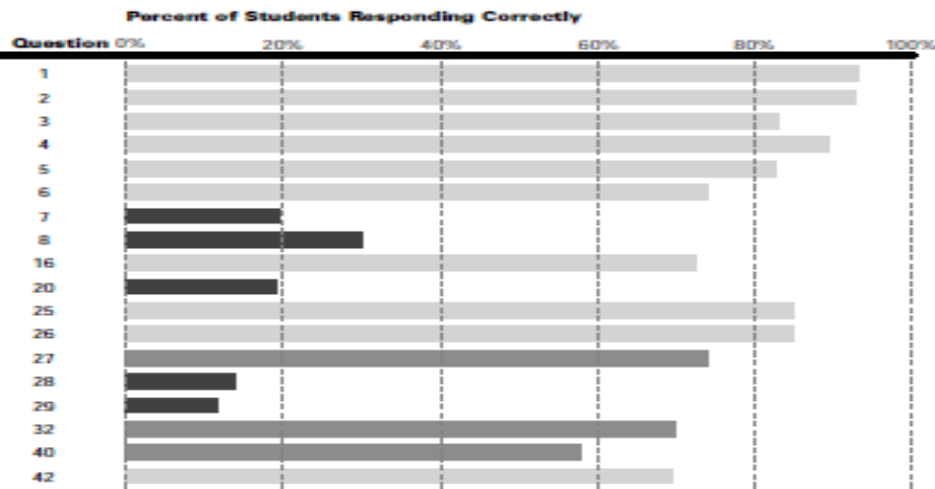
**PSAT**



## Determining the Meaning of Words

Use vocabulary skills, context, roots, prefixes, and suffixes to determine the meaning of words.

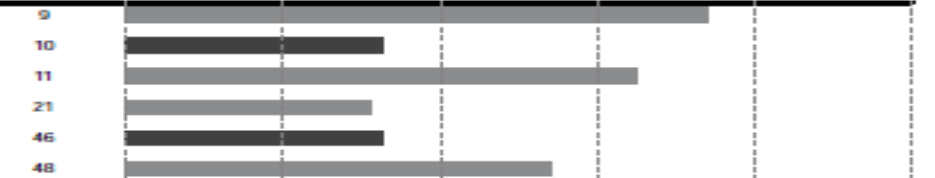
11.2 of 18 questions correct



## Author's Craft

Understand how authors use tone, style and writing devices such as metaphor or symbolism.

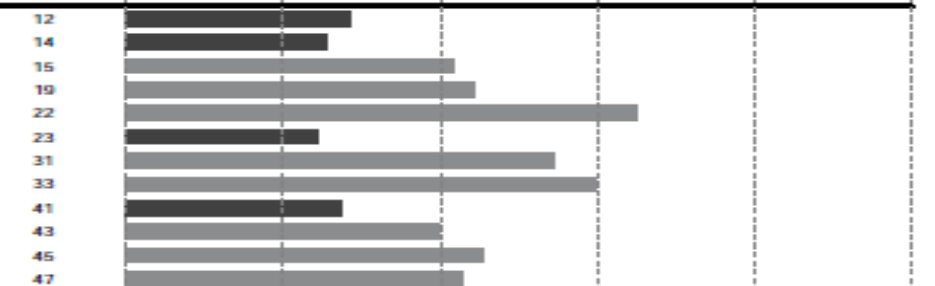
2.9 of 6 questions correct



## Reasoning and Inferencing

Understand assumptions, suggestions and implications in reading passages and draw informed conclusions.

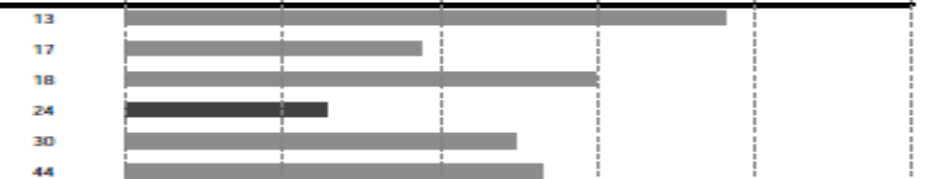
5.0 of 12 questions correct



## Organization and Ideas

Understand the organization of a reading passage, and identify the main and supporting ideas.

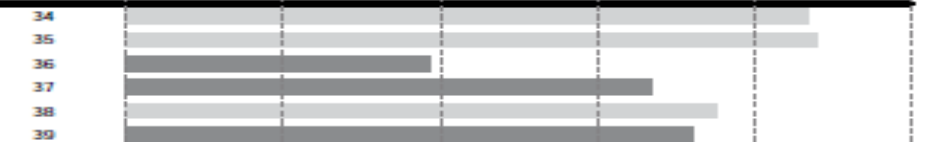
3.0 of 6 questions correct



## Understanding Literary Elements

Understand literary elements such as plot, setting and characterization.

4.3 of 6 questions correct





Mathematics

**PSAT**

**Group****Difficulty**

- School
- ▼ State
- ▲ Nation

- Easy (1-3)
- Medium (4-6)
- Hard (7-9)

**Number and Operations**

Understand types of numbers (integers, fractions, decimals), their properties, and the correct order of operations (addition, multiplication, division). Perform computations correctly.

**4.3** of **9** questions correct

**Algebra and Functions**

Solve problems using algebraic expressions and symbols to represent relationships, patterns, and functions of different types.

**8.2** of **14** questions correct

**Geometry and Measurement**

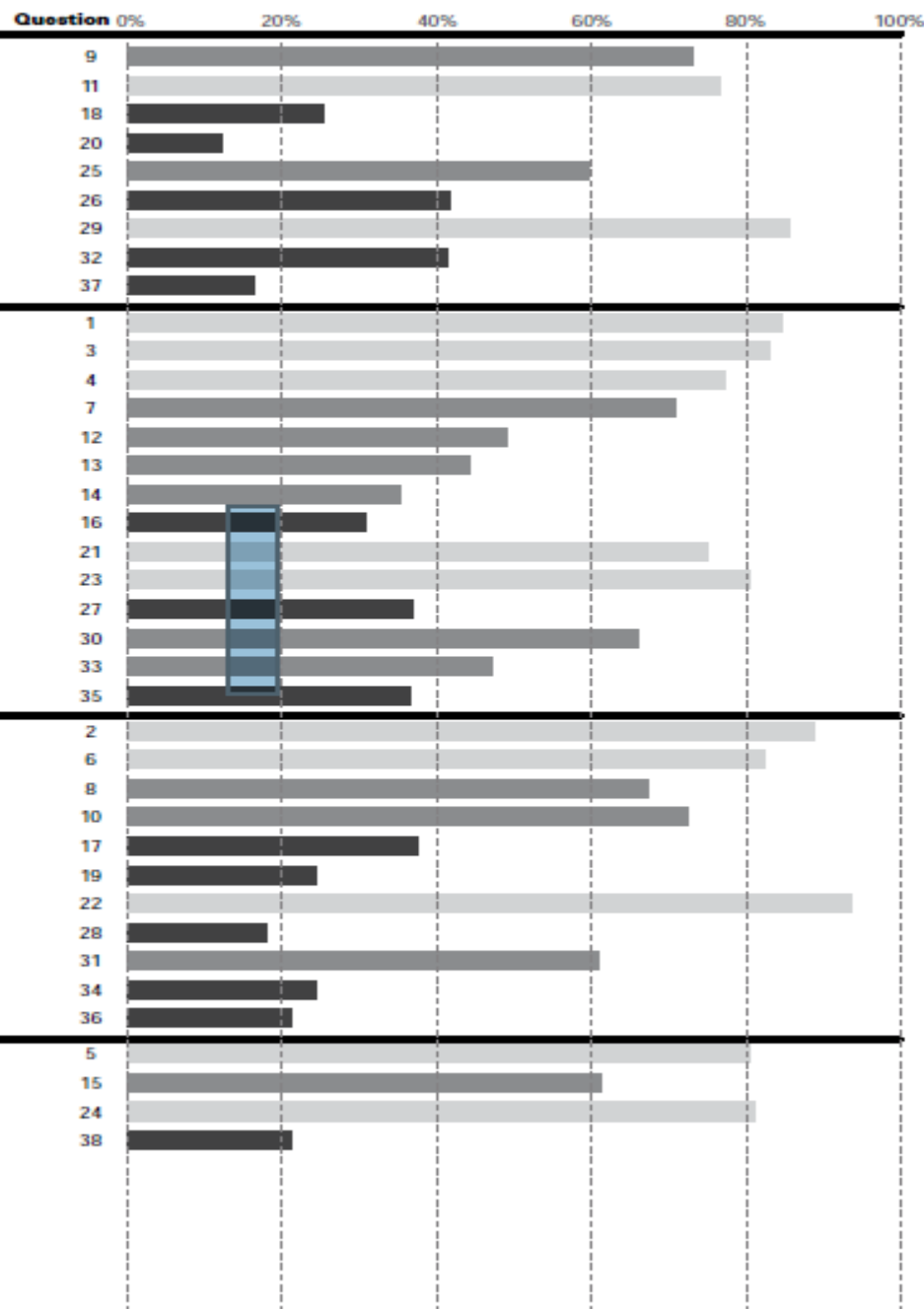
Solve problems based on understanding the properties of shapes, such as triangles and circles, and the spatial relationships between angles and lines.

**5.9** of **11** questions correct

**Data, Statistics, and Probability**

Analyze data, understand descriptive statistics, make inferences and determine the likelihood that certain events will occur.

**2.4** of **4** questions correct

**Percent of Students Responding Correctly**

## Problem Solving

Solve abstract and practical problems, applying and adapting a variety of strategies. Monitor progress and evaluate answers in terms of questions asked.

4.8 of 10 questions correct



## Representation

Use and translate among representations including verbal, numerical, symbolic, and graphical to communicate mathematical ideas and solve problems.

5.2 of 10 questions correct



## Reasoning

Develop and use mathematical arguments and proofs to explore the truth of conjectures and justify conclusions.

3.0 of 6 questions correct



## Connections

Connect ideas from different areas of mathematics (particularly geometry and algebra) to state or solve abstract or applied problems.

4.6 of 7 questions correct



## Communication

Express mathematical ideas precisely and communicate them coherently and clearly in the language and notation of mathematics.

3.2 of 5 questions correct



Writing

**PSAT**

**Group**

- School
- State
- Nation

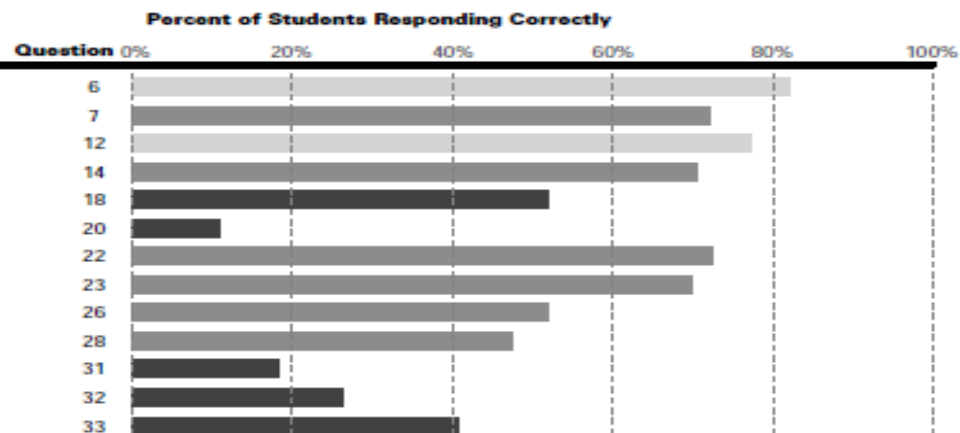
**Difficulty**

- Easy (1-3)
- Medium (4-6)
- Hard (7-9)

## Manage Word Choice and Grammatical Relationships Between Words

Understand relationships between and among words including subject-verb agreement, pronoun reference, and verb form and

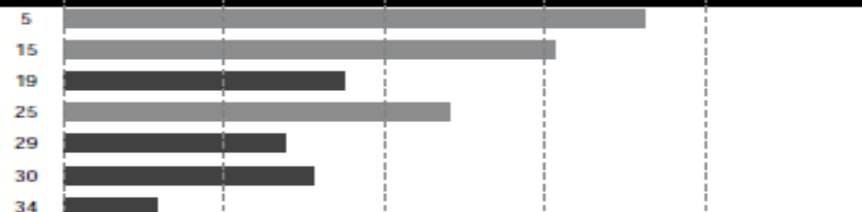
**6.9** of **13** questions correct



## Manage Grammatical Structures Used to Modify or Compare

Understand correct use of adjectives or adverbs, comparative structures (such as neither and nor), and phrases used to modify or

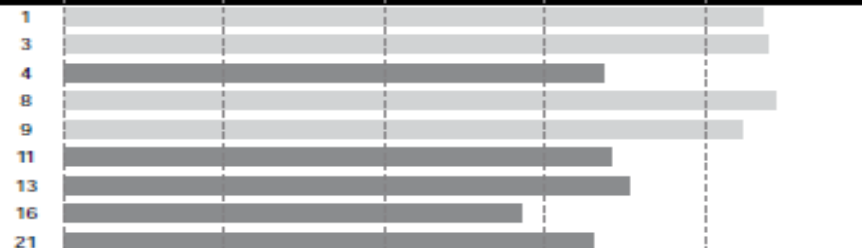
**2.9** of **7** questions correct



## Manage Phrases and Clauses in a sentence

Use well-formed sentence structures (e.g., parallelism, connectives, and relative clauses) to indicate relationships between and among

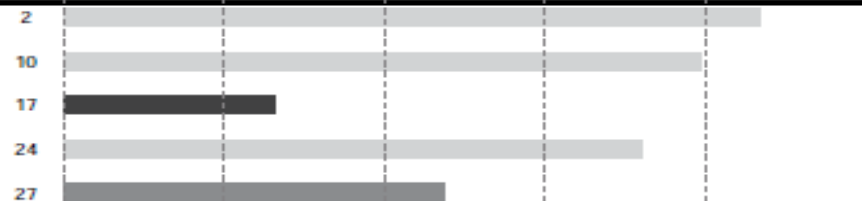
**6.8** of **9** questions correct



## Recognize Correctly Formed Sentences

Recognize correct sentence structure.

**3.1** of **5** questions correct



## Manage Order and Relationships of Sentences and Paragraphs

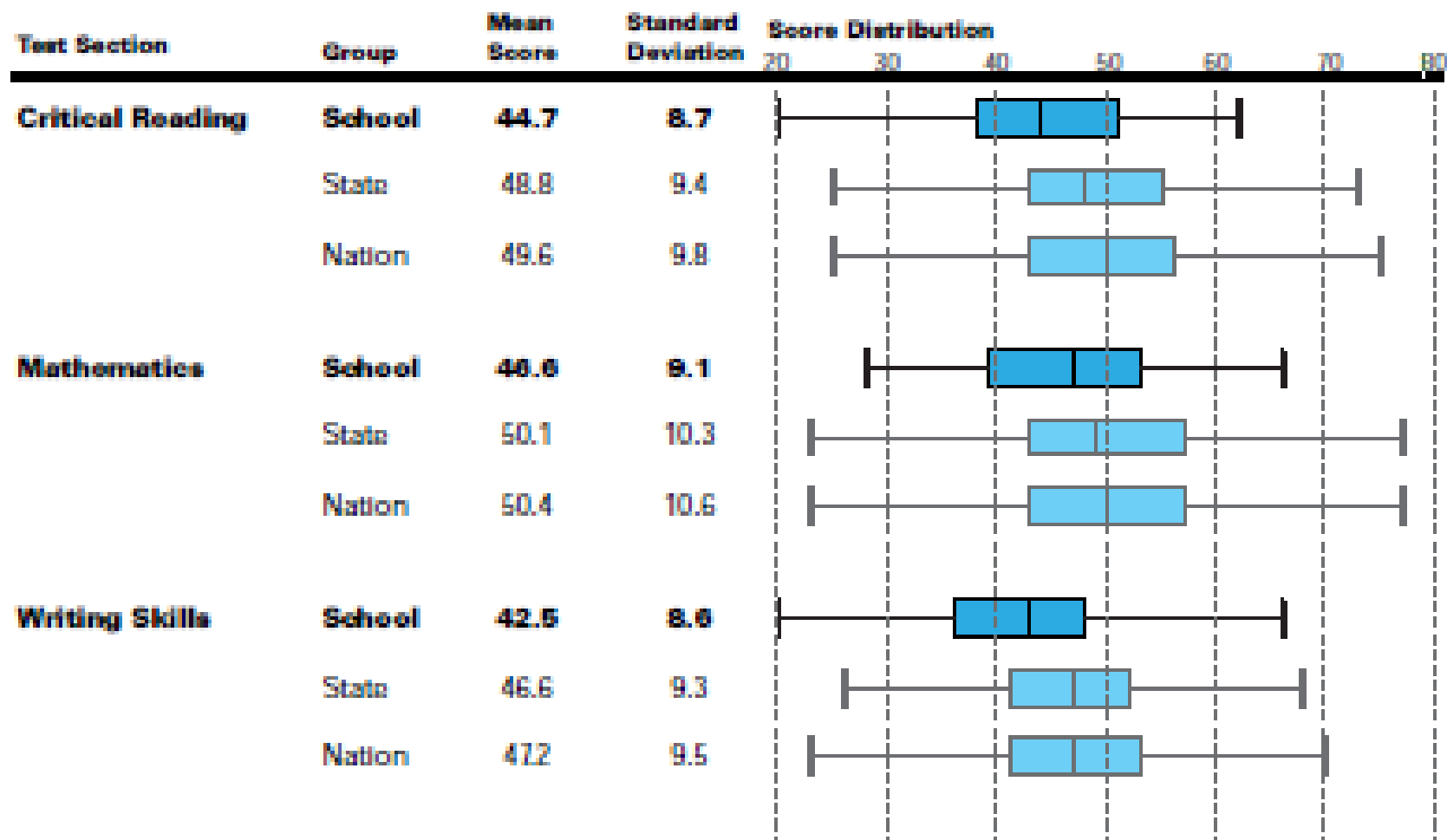
Identify how to order the elements of a sentence or paragraph to improve clarity, meaning, and the progression of ideas.

**2.6** of **5** questions correct



# PSAT Performance

## (119 Students – 10<sup>th</sup> Grade)



# PSAT as College Readiness Indicator

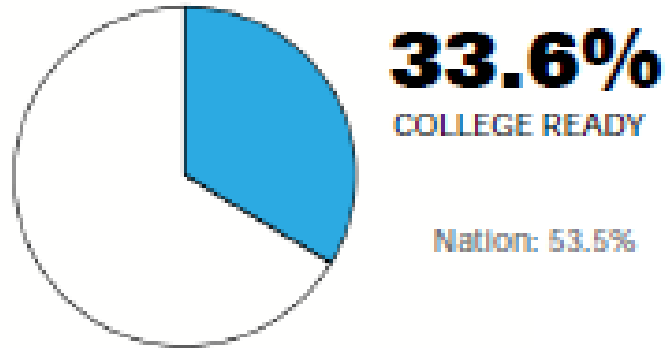
## College Readiness Benchmarks

The PSAT/NMSQT College Readiness Benchmarks represent the scores that a student should meet or exceed to be considered on track to be college ready (for more information about benchmarks, visit [www.collegeboard.com/results](http://www.collegeboard.com/results)).

The pie chart shows the percentage of your students who have met the

PSAT/NMSQT composite score benchmark (152 for juniors and 145 for sophomores). Use this information in combination with Roster of Student Scores and Plans or optional Student Data File CD to identify students who may need extra support or who may be ready for more rigorous course work.

# Nutley's College Readiness





Grade 10 – Critical Reading

**PSAT**

## Determining the Meaning of Words

Use vocabulary skills, context, roots, prefixes, and suffixes to determine the meaning of words.

10.4 of 18 questions correct



## Author's Craft

Understand how authors use tone, style and writing devices such as metaphor or symbolism.

2.6 of 6 questions correct



## Reasoning and Inferencing

Understand assumptions, suggestions and implications in reading passages and draw informed conclusions.

4.0 of 12 questions correct



## Organization and Ideas

Understand the organization of a reading passage, and identify the main and supporting ideas.

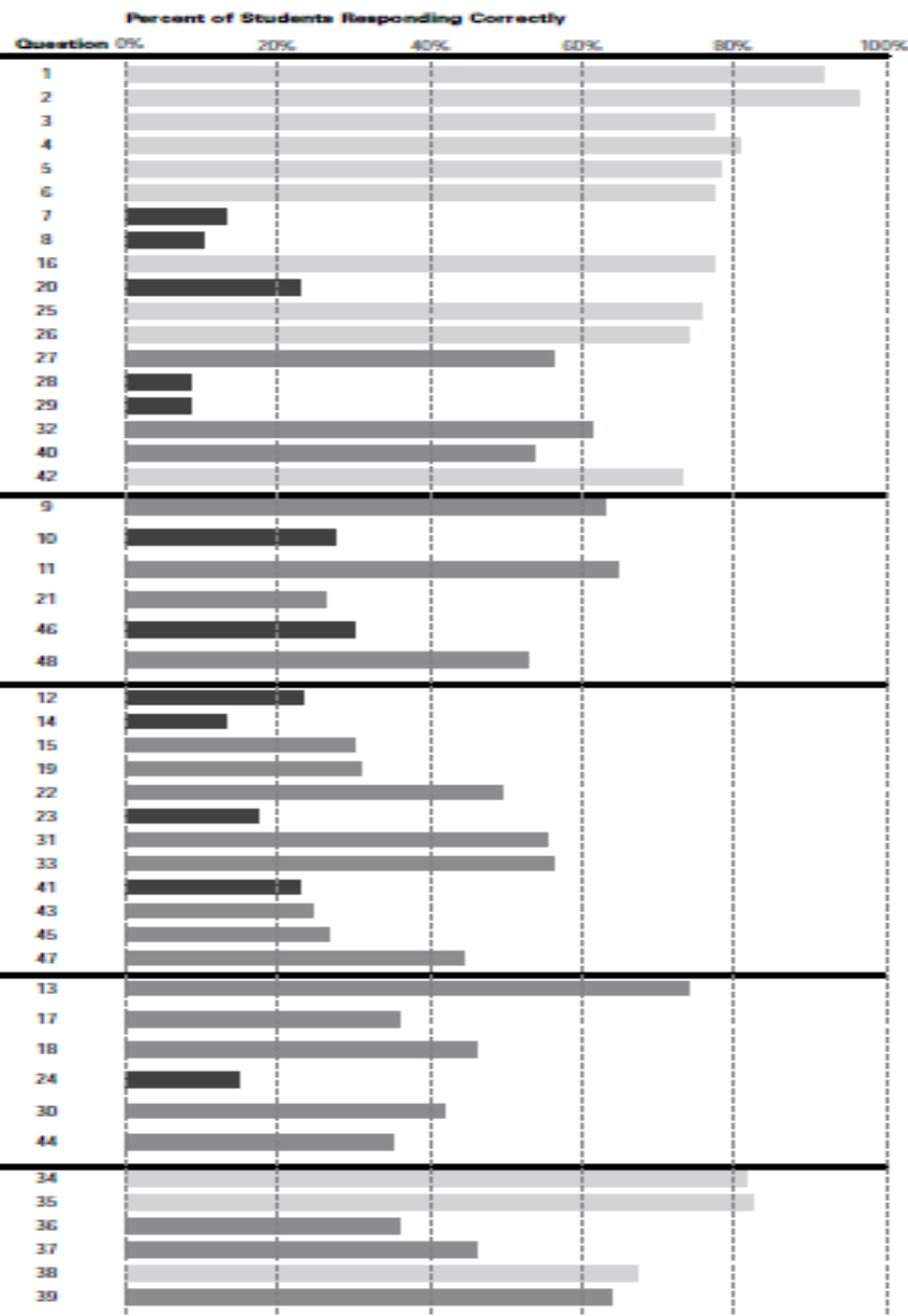
2.5 of 6 questions correct



## Understanding Literary Elements

Understand literary elements such as plot, setting and characterization.

3.8 of 6 questions correct



Grade 10 - Mathematics

**PSAT**

Number and Operations

Understand types of numbers (Integers, fractions, decimals), their properties, and the correct order of operations (addition, multiplication, division). Perform computations correctly.

4.0 of 9 questions correct



Algebra and Functions

Solve problems using algebraic expressions and symbols to represent relationships, patterns, and functions of different types.

7.1 of 14 questions correct



Geometry and Measurement

Solve problems based on understanding the properties of shapes, such as triangles and circles, and the spatial relationships between angles and lines.

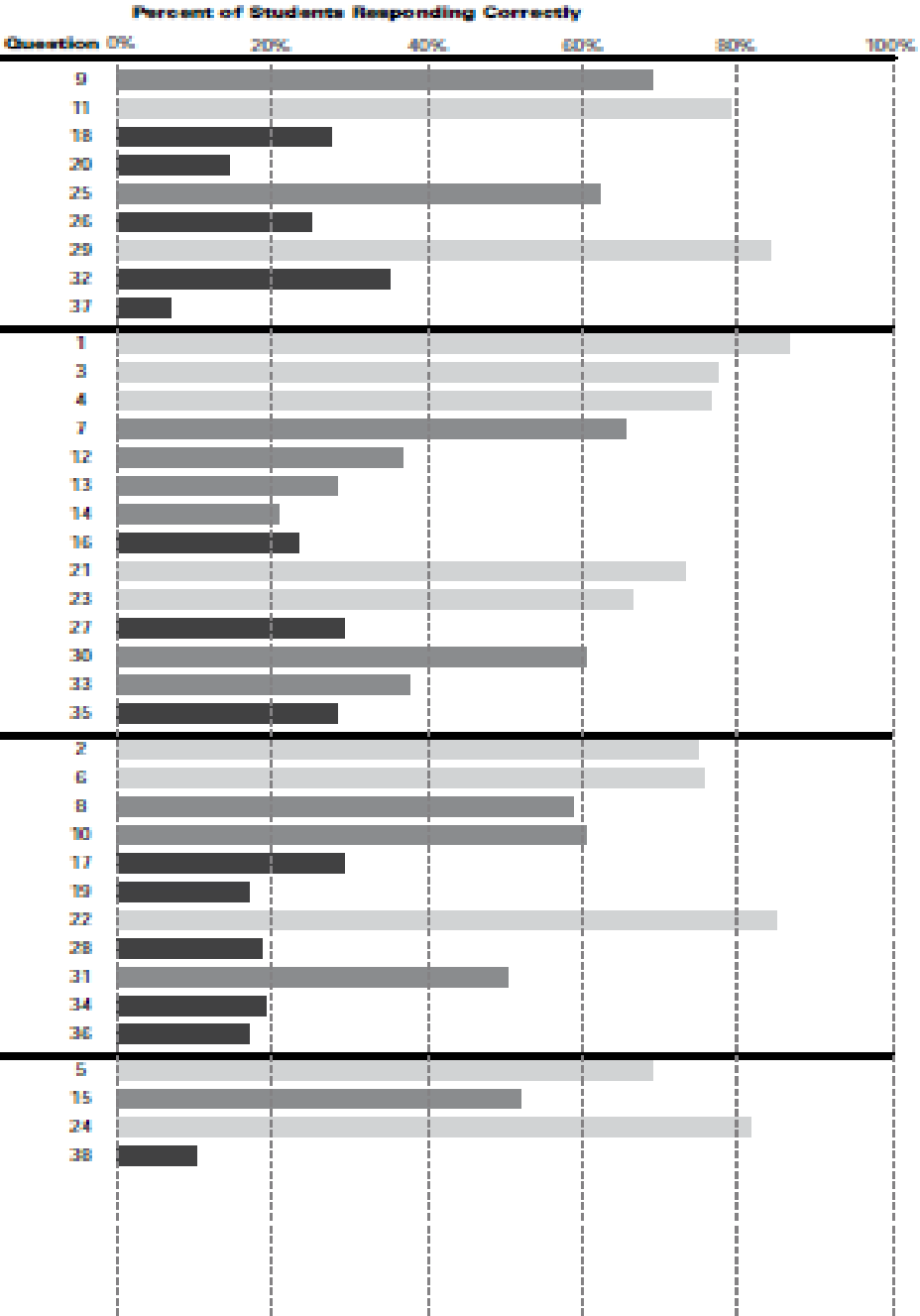
5.1 of 11 questions correct

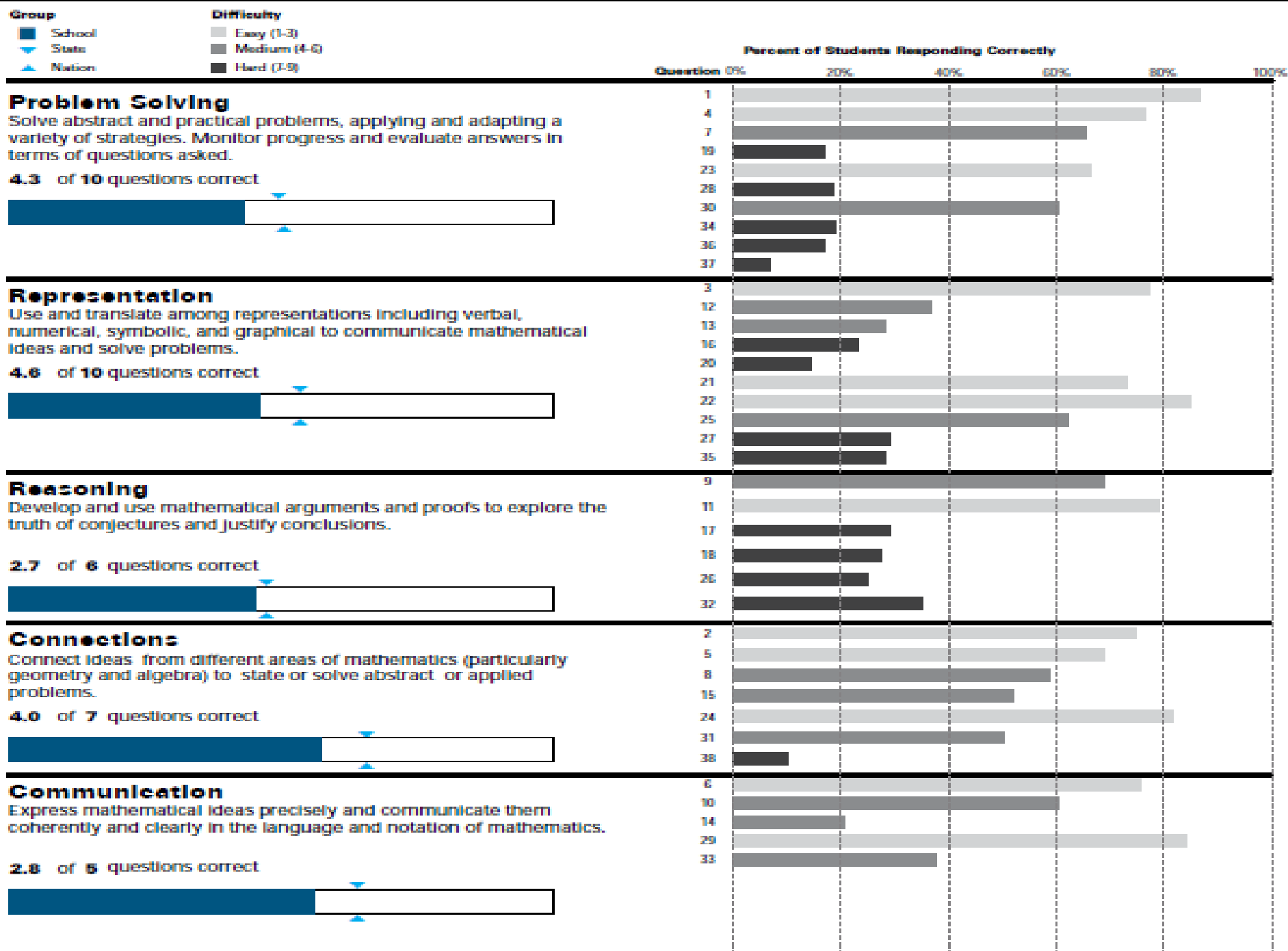


Data, Statistics, and Probability

Analyze data, understand descriptive statistics, make inferences and determine the likelihood that certain events will occur.

2.1 of 4 questions correct





Grade 10 - Writing

**PSAT**

**Group**
**Difficulty**
 School

 Easy (1-3)

 State

 Medium (4-6)

 Nation

 Hard (7-9)

**Percent of Students Responding Correctly**
**Question** 0% 20% 40% 60% 80% 100%

**Manage Word Choice and Grammatical**
**Relationships Between Words**

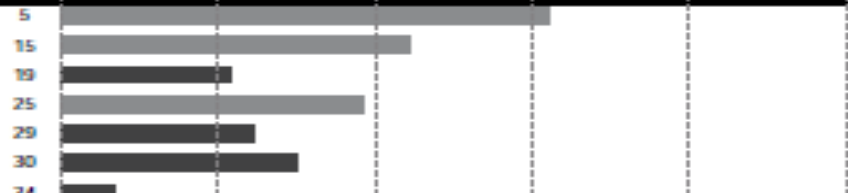
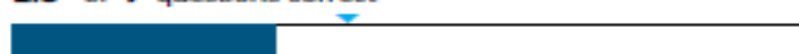
Understand relationships between and among words including subject-verb agreement, pronoun reference, and verb form and

**5.7** of **13** questions correct


**Manage Grammatical Structures Used to**
**Modify or Compare**

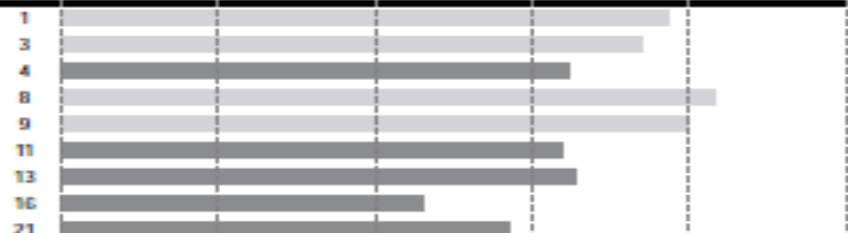
Understand correct use of adjectives or adverbs, comparative structures (such as neither and nor), and phrases used to modify or

**2.3** of **7** questions correct


**Manage Phrases and Clauses In a sentence**

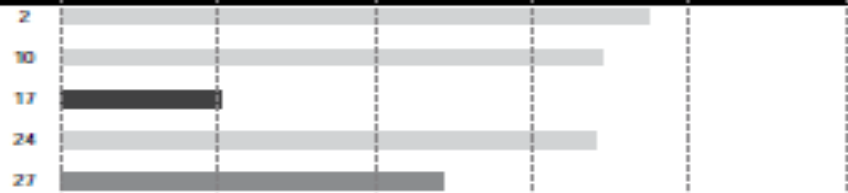
Use well-formed sentence structures (e.g., parallelism, connectives, and relative clauses) to indicate relationships between and among

**6.1** of **9** questions correct


**Recognize Correctly Formed Sentences**

Recognize correct sentence structure.

**2.8** of **5** questions correct


**Manage Order and Relationships of Sentences and Paragraphs**

Identify how to order the elements of a sentence or paragraph to improve clarity, meaning, and the progression of ideas.

**2.3** of **5** questions correct



# Course of Action

---

- Informed Conversation
- Academic Plan
- Communications Plan
- Resources for Staff, Students, and Parents



External Anchors  
SAT, AP, PSAT

# Student Performance